



The background of the slide features a blue-toned image of a hand pointing upwards. Overlaid on this is a large, stylized 'AI' in a light blue, wireframe font. Below the 'AI', the words 'ARTIFICIAL INTELLIGENCE' are written in a smaller, similar font. The entire graphic is set against a background of glowing blue lines and dots, suggesting a network or data flow.

Unlock the Future of **Ethical AI Leadership**

AI Ethics and Governance for Leaders

AI ETHICS AND GOVERNANCE FOR LEADERS



Date

To be advised



Venue

NUS Computing
SEA Building
ACE Training Room



Cost

S\$2,400 + GST



Assessment

Assignment and
Online Test



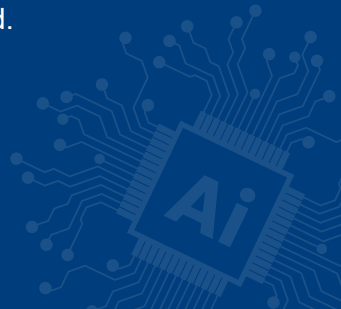
Certificate

Participants will receive a
School of Computing
certificate

The rapid evolution of Artificial Intelligence (AI) is transforming industries and creating unparalleled opportunities for innovation and growth. However, with this transformation comes the responsibility to address ethical and governance challenges.

To foster trust and confidence in AI, organisations need to adhere to principles such as **fairness**, **transparency**, **explainability**, **human centricity** and **auditability**. It also means aligning internal policies, structures and processes with these principles.

This course aims to equip leaders, senior management, C-Suite executives, Board of Directors, and top decision makers with the latest frameworks and regulations related to setting AI Ethics and Governance (E&G) policies for the organisation. Participants will engage in group discussions and presentations on case studies related to AI E&G to hone their understanding of the complexities involved.



KEY TAKEAWAYS



Importance of Ethical AI Governance

Understand why ethical governance is crucial in AI.



Address AI Ethics Issues

Tackle issues like bias, explainability, accountability and auditability.



Apply Frameworks and Regulations

Implement ethical AI practices using established guidelines.



Develop Policies

Create effective policies for responsible AI development and deployment.

COURSE OUTLINE

DAY

1

- Definitions of AI, ML, DL, SL, UL, GAI and AGI
- Bias & Human Centricity
- Types, Impact, Pros/Cons of Bias
- ChatGPT & GAI
- Clarity in Leadership
- Why AI Verify Matters
- Case Studies

DAY

2

- Accountability & Responsibility
- How Leaders Should Use Frameworks
- Sustainability & Auditability
- Stakeholder Management and Segmentation
- Data Governance and Regulations
- AI Concerns for Leaders
- Tools and Tips

FACILITATOR

Raju Chellam is a Fellow of NUS School of Computing's Executive Education - Advanced Computing for Executives (ACE) Team. He is the Editor-in-Chief of the AI Ethics & Governance Body of Knowledge, an initiative by the Singapore Computer Society (SCS) & Infocomm Media Development Authority (IMDA) of Singapore. He was conferred as an SCS Fellow in March 2018. Raju is Honorary Chairman of Cloud & Data Standards at IT Standards Committee, Honorary Vice President of SCS Cloud Chapter, and sits on the Executive Committee of SCS AI & Robotics Chapter. He writes a regular column on tech in The Edge (Malaysia), Dataquest (India) and occasionally in The Straits Times (Singapore).



Mr Raju Chellam

ACE Executive Education Fellow
NUS Computing

“

Ignoring AI ethics and governance is like driving a car without brakes; the journey may be fast, but the crash will be catastrophic. Grab this opportunity to get updated on AI frameworks, guidelines, policies and regulations.

Mr Raju Chellam

”

CERTIFICATE

Upon successful completion of the programme, participants will be awarded a **Certificate of Completion** by NUS School of Computing.



NUS School of Computing

Advanced Computing for Executives (ACE)



Continuing Education
High quality training and education to the workforce with emphasis on interactive learning



Wide Range of Courses
Courses range from AI and Data Analytics to Cybersecurity and Software Engineering



Networking
Opportunities to network with fellow students

NUS

8th

in the World

NUS Computing

4th

Computer Science &
Info Systems

7th

Data Science & AI

QS World University Rankings 2025

SCAN FOR
MORE DETAILS



For enquiries, contact:

Jason See
Advanced Computing for Executives (ACE)
NUS School of Computing
Email: jason.s@nus.edu.sg
Tel: +65 6516 1742

Follow us on social media



 www.ace.nus.edu.sg

 soc-ace@nus.edu.sg